



L'inventeur du système à pince pour toile tendue



Welcom in the SwalDeco univers. High quality material for best professionals

Stretch ceiling & Stretch coatings system

SwalDeco, the inventor of the clip system, since 1982





Technical specifications - profiles clip CLIP SWAL for textiles and PVC membrane

Photos and details www.swaldecou.eu

Standard range (since 1982) Stretch ceiling | walls hung

Clip SWAL 105 white

Applications : All coatings tense, except PVC
Mounting : wall & ceiling, stapled, glued or screwed
Finish: border border visible or clothed (invisible)
Long. : 1.05 m / Thickness : 9 mm / width : 41 mm / finish 3 mm
PVC - Non-flammable



Clip SWAL 105 black

Applications : All coatings tense, except PVC
Mounting : wall & ceiling, stapled, glued or screwed
Finish: border border visible or clothed (invisible)
Long. : 1.05 m / Thickness : 9 mm / width : 41 mm / finish: 3 mm
PVC - Non-flammable



Clip SWAL 107 white - flexible

Applications : All coatings tense, except PVC
Mounting : wall & ceiling, stapled, glued or screwed
Finish: border border visible or clothed (invisible)
Long. : 1.05 m / Thickness : 9 mm / width : 41 mm / finish: 3 mm
PVC - Non-flammable



Clip SWAL 107 black - flexible

Applications : All coatings tense, except PVC
Mounting : wall & ceiling, stapled, glued or screwed
Finish: border border visible or clothed (invisible)
Long. : 1.05 m / Thickness : 9 mm / width : 41 mm / finish: 3 mm
PVC - Non-flammable



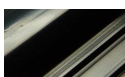
Clip SWAL 108 white

Applications : All coatings tense, except PVC
Mounting : wall & ceiling, stapled, glued or screwed
Finish: border border visible or clothed (invisible)
Long. : 2.00 m / Thickness : 9 mm / width : 41 mm / finish: 3 mm
PVC - Non-flammable



Clip SWAL 108 black

Applications : All coatings tense, except PVC
Mounting : wall & ceiling, stapled, glued or screwed
Finish: border border visible or clothed (invisible)
Long. : 2.50 m / Thickness : 9 mm / width : 41 mm / finish: 3 mm
PVC - Non-flammable



Range & Special SWALTEX PVC film (since 1995) Stretch ceiling | walls hung

Clip SWAL New 200 white (squared)

Applications: Special for laying PVC film & Other
Mounting : wall, stapled, glued or screwed
Finish: border border visible or clothed (invisible)
length. : 2 m / Thickness : 24 mm / width : 35 mm / finish : 6 m
PVC - Non-flammable
Spécificity : lowers the level of the ceiling.



Clip SWAL New 201 white (plat)

Applications: Special for laying PVC film & Other
Mounting : wall & ceiling, stapled, glued or screwed
Finish: border border visible or clothed (invisible)
length 2.00 m / Thickness: 9 mm / width : 41 mm / finish: 3 mm
PVC - Non-flammable



Clip SWAL 200 white (squared)

Applications : Thin coatings & SWALTEX
Mounting : wall, stapled, glued or screwed
Finish: border border visible or clothed (invisible)
length. : 2 m / Thickness: 24 mm / width : 35 mm / finish: 6 m
PVC - Non-flammable
Spécificity : lowers the level of the ceiling.



Clip SWAL 201 white (flat)

Applications : Thin coatings & SWALTEX
Mounting : wall & ceiling, stapled, glued or screwed
Finish: border border visible or clothed (invisible)
length. : 2.00 m / Thickness: 9 mm / width 41 mm / finish 3 mm
PVC - Non-flammable



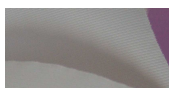
Caution, new length
Clip for reference SWAL 108 W: 2.00 m

CLIP SWAL Sections in PVC

Frames



Coatings



Flannellete



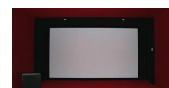
Printed coverings



Padding



Acoustic system





Technical specifications - Technical Coatings SWALTEX

The SWALTEX TREVIRA CS Coating

Decorating | Renovation | Design | Certified High fire resistance

Applications: All living rooms, offices ...

- Installation cold with all profiles Clip SWAL
- ceiling & wall mount
- Roll width 3.10 m / 4.10 m / 5.05 m
- Fibre reinforced Trevira CS coated with a layer of polyuréthane.
- Fibre reinforced Trevira CS
- Specifications:
Weight: 245 g / m²
thickness: 0.44 mm
- Fire classification:
M1, B1 (Euroclass DIN 13501-1 Bs1d0)
- Available colors:
Optical white
Natural white (ecru)
- Ultra tensile strength (15 times higher than PVC)
- Resistance to moisture (water repellent & hydrophobic)
- airtight
- Opaque, do not let light pass
- Se painted with acrylic paint
- Do not fray after cutting

Certified



Quality warranty

The SWALTEX Acoustic Coating

Acoustic correction system | Design

Applications: Hotels, restaurants, lounges, Bruille environments, recording studios, offices ...

- Installation cold with all profiles Clip SWAL
- ceiling & wall mount
- Roll width 5.05 m
- Fibre reinforced Trevira CS coated with a layer of polyuréthane.
- Specifications:
Weight: 185 g / m²
thickness: 0.44 mm
- Fire classification:
M1, B1 (Euroclass DIN 13501-1 Bs1d0)
- Available colors:
Natural White
Black satin lightly
- Optimizes performance fleece SWAL ACOUSTIC
- Clear sound.
- microperforated.
- Ultra tensile strength (15 times higher than PVC)
- Humidity Resistance (DWR)
- Opaque, do not let light pass
- Do not fray after cutting

SWALTEX Coatings

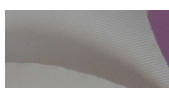
DIGITAL PRINTING

For information about digital printing on fabric, do not hesitate to contact us directly.

Frames



Coatings



Flannellette



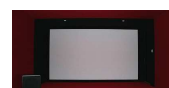
Printed coverings



Padding



Acoustic system





Technical specifications - ACOUSTIC system SWAL

Improve the acoustic comfort of your environment.

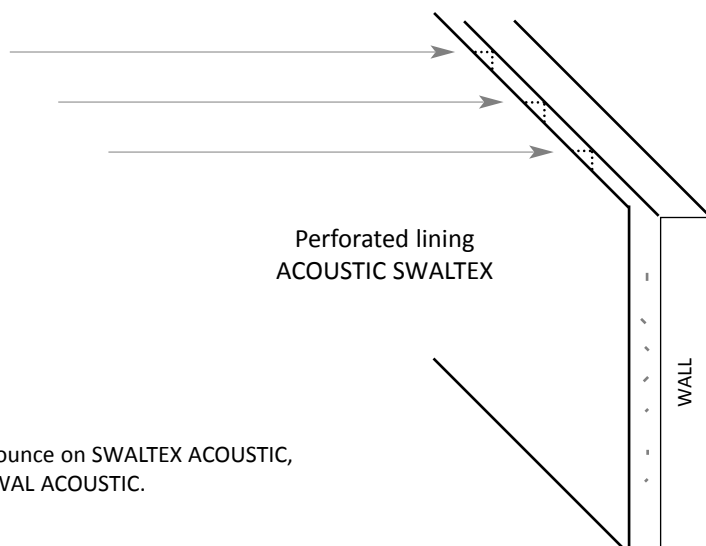
Correction system of the acoustic environment with fleece lining and tense.

Performance is optimized from the combination of coating and microperforated SWALTEX ACOUSTIC ACOUSTIC SWAL fleece.

Suitable for:

- acoustic ceilings
- sound insulation walls
- cinemas
- home theaters and rooms dedicated to music
- Hotel rooms and cottages
- Restaurants
- waiting

The principle of acoustic trap



The sound goes through and does not bounce on SWALTEX ACOUSTIC, it is then trapped by a layer of fleece SWAL ACOUSTIC.

Layer of SWAL ACOUSTIC (10 mm) flannelette
= trap frequencies

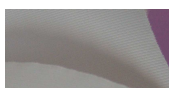
Acoustic system

Laboratory tests. Measurement of absorption and reverberation in accordance with the standard cab Alpha PSA / RSA D49 1977

Frames



Coatings



Flannelle



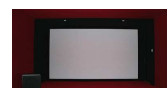
Printed coverings



Padding



Acoustic system





Performances de la correction acoustique du molleton SWAL Acoustic

Tests réalisés en laboratoire. Mesure d'absorption et de réverbération en Cabine Alpha selon la norme PSA / RSA D49 1977

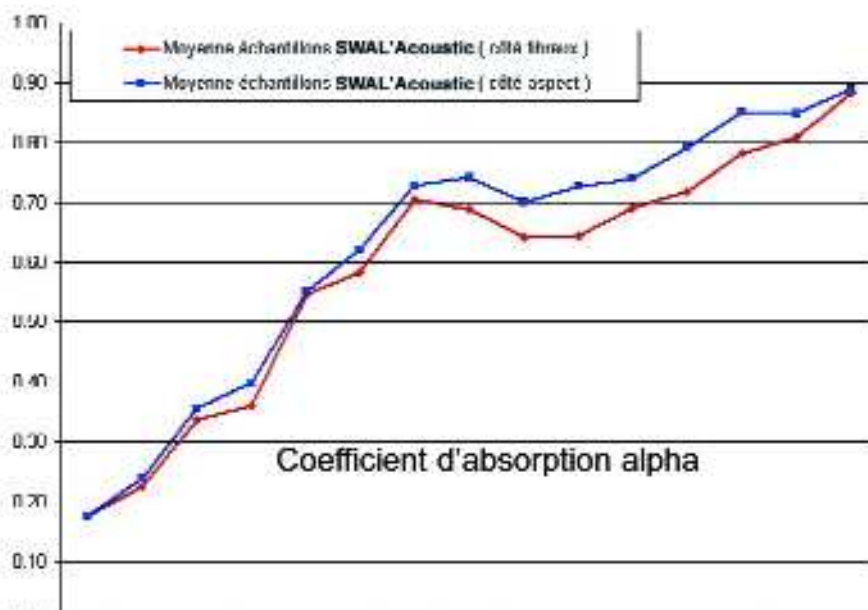
La correction des fréquences médium (type voix humaine) est très bonne (> 0.5)

La correction des fréquences hautes (sons aigus, type choc métallique, talon aiguille, carrelage) est excellente (> 0.8)

Acoustic system



côté fibreux

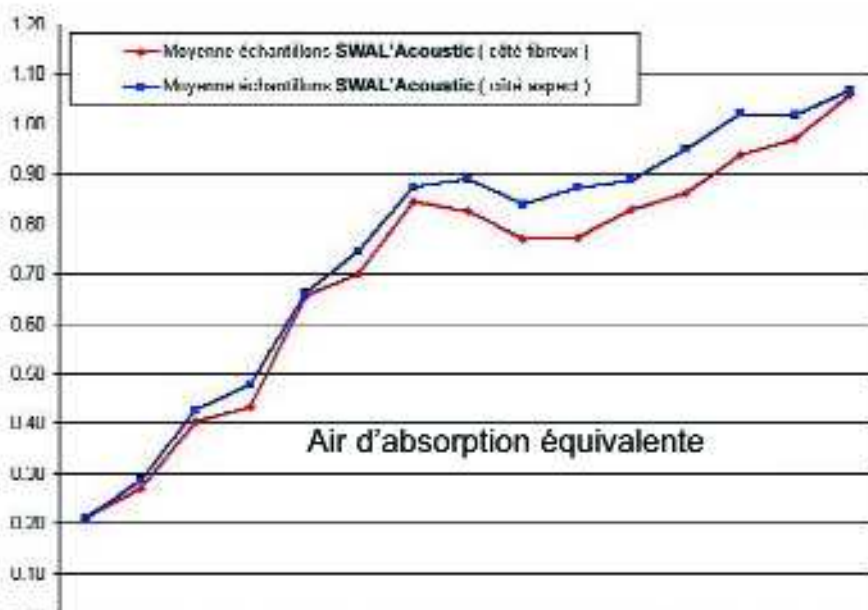


	400	500	630	800	1000	1250	1600	2000	2500	3150	4000	5000	6300	8000	10000
Moyenne échantillons SWAL'Acoustic (côté fibreux)	0.10	0.22	0.36	0.36	0.55	0.59	0.70	0.69	0.64	0.64	0.68	0.77	0.76	0.81	0.88
Moyenne échantillons SWAL'Acoustic (côté aspect)	0.18	0.24	0.36	0.40	0.55	0.62	0.73	0.74	0.70	0.73	0.74	0.79	0.85	0.85	0.89

Taux d'octave (Hz)



côté support



	400	500	630	800	1000	1250	1600	2000	2500	3150	4000	5000	6300	8000	10000
Moyenne échantillons SWAL'Acoustic (côté fibreux)	0.21	0.27	0.45	0.43	0.66	0.70	0.84	0.83	0.77	0.77	0.83	0.86	0.94	0.97	1.06
Moyenne échantillons SWAL'Acoustic (côté aspect)	0.23	0.29	0.43	0.48	0.66	0.75	0.87	0.88	0.84	0.87	0.89	0.95	1.02	1.02	1.07

Taux d'octave (Hz)

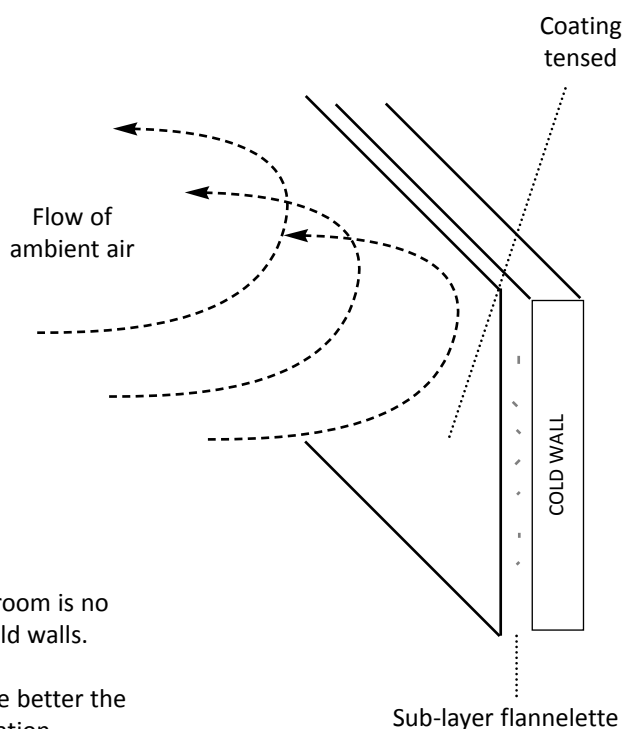


Technical specifications - Thermal properties

The stretched fabric improves the thermal performance of living spaces.

A layer of fleece and a layer of fabric considerably increase the thermal performance of homes. This technique is therefore an appropriate solution for better insulation.

The principle of thermal insulation



The air circulating in your room is no longer in contact with cold walls.

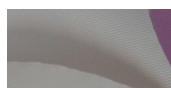
Plus the coating is dense, the better the performance of insulation increase.

Thermal performances

Frames



Coatings



Flannelette



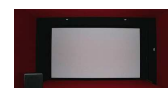
Printed coverings



Padding



Acoustic system



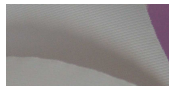


COLLECTION SWAL PRINT™

Profilsés



Revêtements



Molletons



Toile imprimée

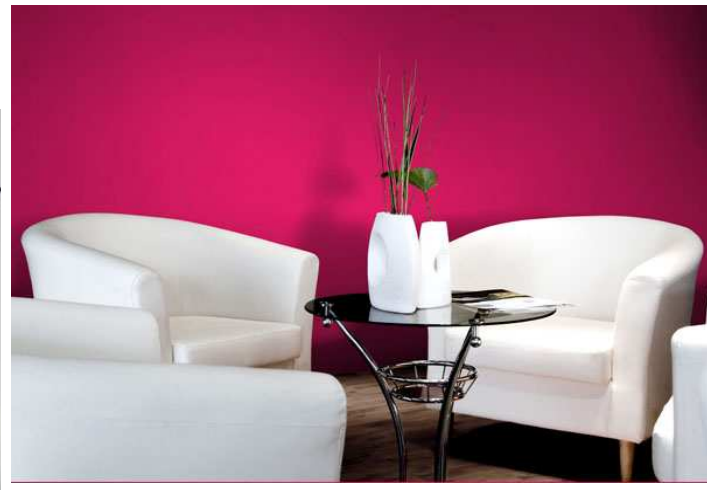


Capitonnage



Acoustique



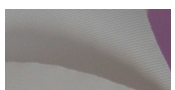


COLLECTION SWAL PRINT™

Profilés



Revêtements



Molletons



Toile imprimée



Capitonnage



Acoustique

